

5-in-1

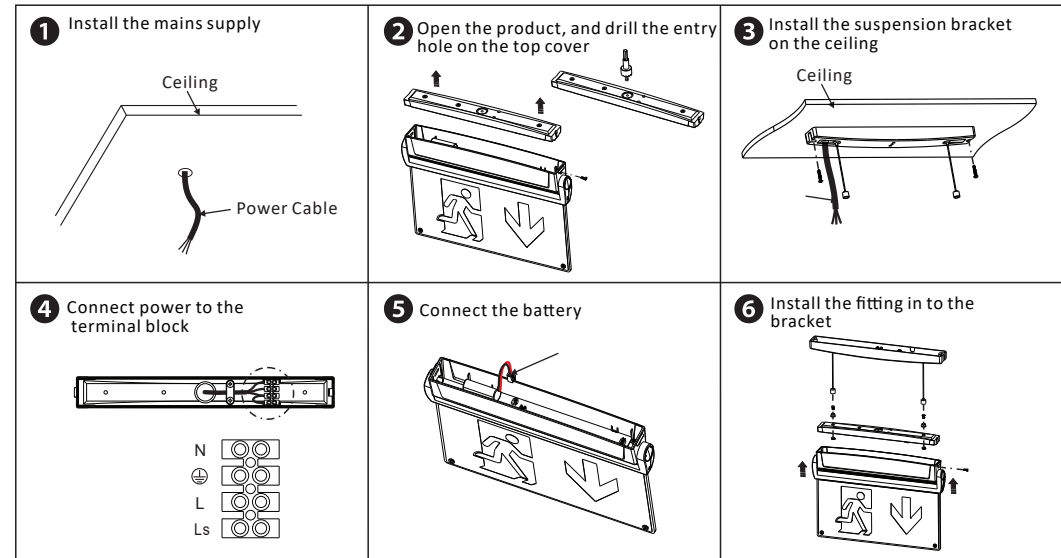
Emergency Exit Sign

E/5in1/M3

SPECIFICATION:

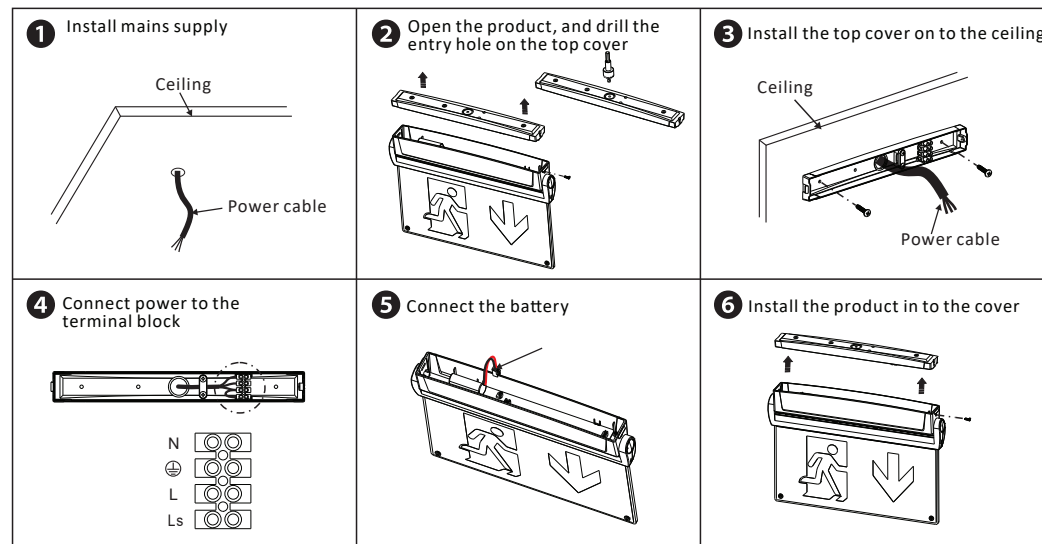
1. Operating temperature: 0 ~ 40。
2. Operating relative humidity: less than 90%.
3. Rated voltage: 220-240V 50/60Hz.
4. Rated power: 2.8W.
5. Changeover time: 1 second.
6. LED: SMT LED
7. Emergency duration: more than 3 hours.
8. Battery installed or replaced: 3.6V 800mAh Ni-Cd.
9. Fuse installed or replaced: 1A/3.15A 250V.
10. Recharge time: 24 hours.

Ceiling suspended installation

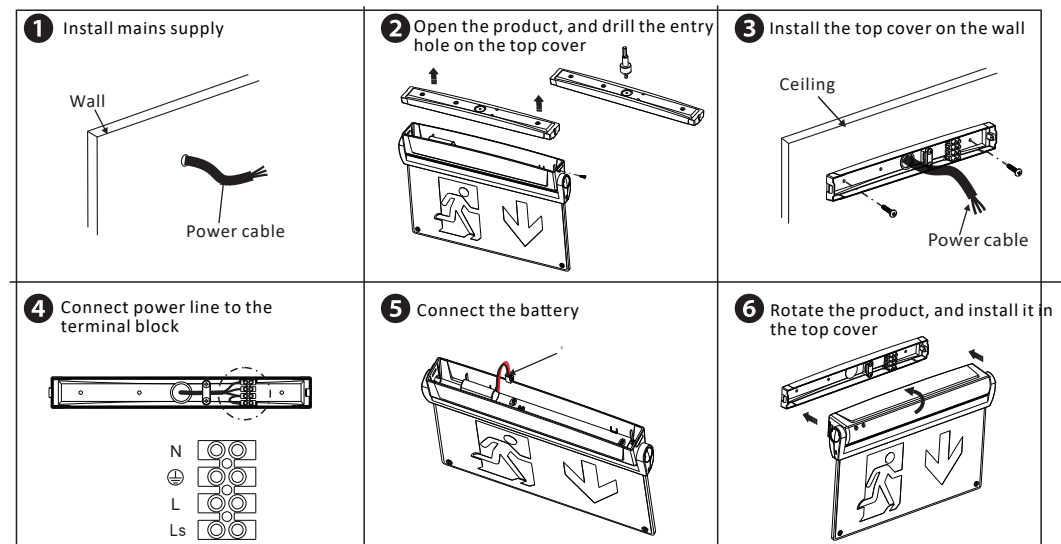


Installation

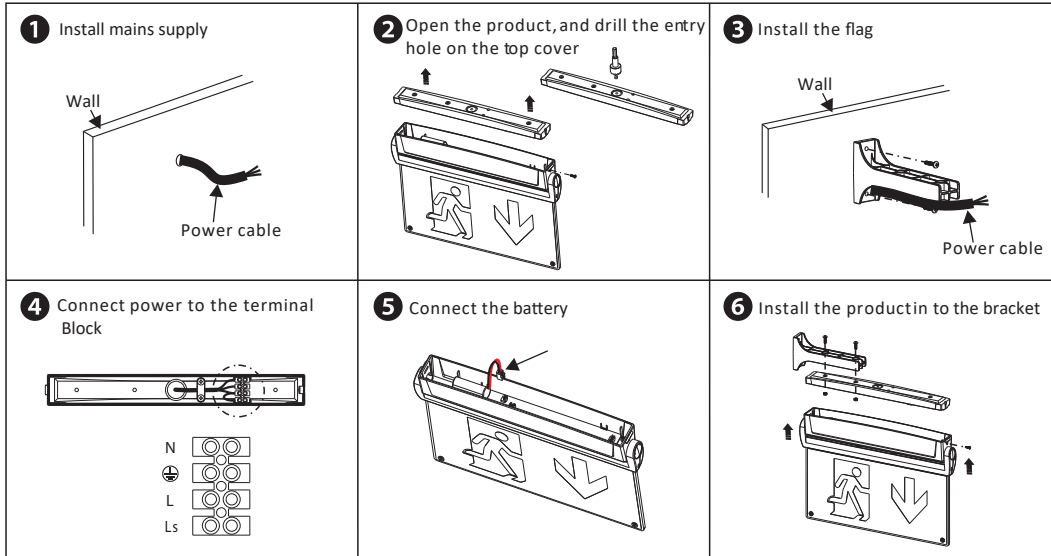
Ceiling-mounted



Wall-mounted



Flag-mounted



INSTALLATION

This product should be installed by a competent electrician

1. ISOLATE THE A.C. SUPPLY and connect unit.
An unswitched 240V A.C. supply must be connected to the live (L). Earth and neutral (N) terminals on the PCB block. On Maintained circuits continuous illumination can be achieved by connecting a live supply to Ls (This may be switched)
2. Plug battery lead into connector on the PCB.
3. Refit the gear tray into the base of the unit making sure the two screws are securely fixed.
4. Refit Diffuser making sure the two screws are securely fixed.
5. Operational Check – Restore the A.C. Supply for 30 minutes and then remove.
The lamp should strike and illuminate for at least 10 seconds.
6. Restore the A.C. supply and check that the indicator LED is 'on'.
7. Do not discharge the unit for at least 24 hours, this is to allow the battery to charge.

RECOMMENDED ROUTINE TEST PROCEDURE

The following test is designed to ensure the continued protection of your premises and occupants. Because of the possibility of a failure of the normal lighting supply occurring shortly after a period of testing, all tests should, whenever possible, be undertaken at times of least risk, e.g. during daylight hours.

ONCE A DAY

Visual inspection of battery charge led.

ONCE A MONTH

Each unit should be energised from it's battery for adequate time to ensure, by simulation of a failure of the normal lighting supply, the emergency mode is functioning correctly.

ONCE EACH YEAR

All units should be placed into emergency mode and checked that the duration provided by the battery meets the specified time period.

Remote Control Operation

Aim the RC unit at the 5in1 exit sign.
Press the button **once & the exit sign will test for 5 seconds**, the green charging LED will extinguish for 5 seconds, At the end of the test the green charging LED will illuminate.
Press the button **twice & the exit sign will test for 3 hours**, the green charging LED will extinguish for 3 hours, At the end of the test the green charging LED will illuminate.

Fault indication

Should the unit fail the test it will give the following indications:
Light source failure - Red LED flash twice every 3 seconds
Duration failure - Red LED will flash three times every 3 seconds
Once the fault has been corrected carry out a further test & the Green LED should illuminate at the end of the test.

The light source contained in this luminaire shall only be replaced by the manufacturer or his service agent or a similarly qualified person.

Channel Safety Systems – GU32 3QA channelsafety.co.uk

Recessed-mounted

