

SAFETY INSTRUCTIONS

To ensure correct function and safety, please read and follow all instructions carefully before using the product:

1. Turn off power supply before installation or before doing any maintenance work.
2. Do not install any luminaire near the heat source.
3. IP grade please refer to product label, only IP54 can be used in damp locations.
4. Do not exceed the nominal supply voltage or amperage ratings.
5. Dimmable version could be compatible with a wide range of recommended TRIAC dimmers.
6. All wiring and installation of the light fitting must adhere to local and national wiring rules.
7. Take care not to pull any electrical wires during unpacking as this may damage the connection.
8. Lay out all the components on a smooth surface and make sure there are no components missing before assembling.
9. To avoid injury or damage to the fitting, please ensure that power leads and screws are secure before connecting the power.
10. Please keep instructions for future reference.

For non replaceable light sources:

The light source of this luminaire is not replaceable; when the light source reaches its end of life the whole luminaire shall be replaced.

Installation Procedure

WARNING

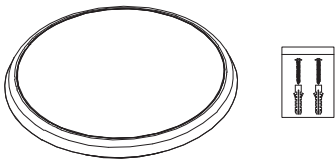
1. Switch off before installation.
2. Switch on only after complete installation and examination of the circuit.
3. Professional electrician for installation and maintenance only.



Turn Off power supply before starting any installation. Read instructions & check you have all the tools & accessories to complete the installation correctly.

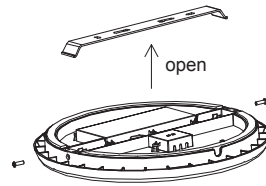
Step 1

Take out the light and accessory pack from box.



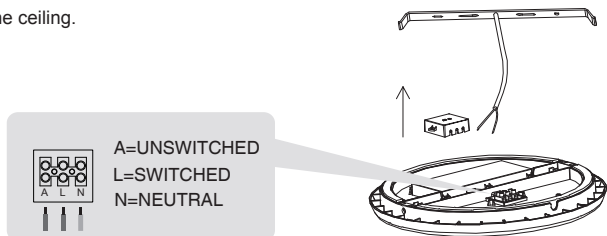
Step 2

Remove screw, take out bracket.



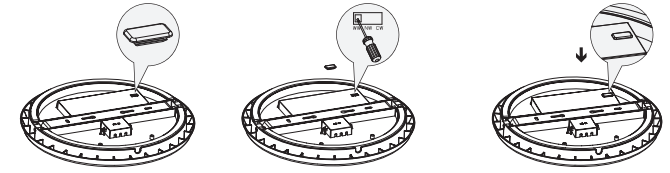
Step 3

Fix bracket with screws into the ceiling.



Step 4

For color changeable model (controlled by Slide Switch in lamp), please select light color before mounting to ceiling or wall, see below picture.



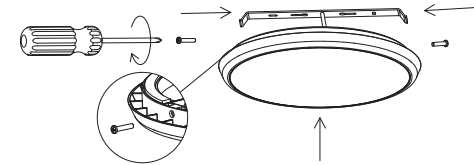
1. Take rubber stopper out from slide switch for color selection.

2. Choose color by slide switch with corresponding color temperature.

3. Insert rubber stopper back into slide switch properly.

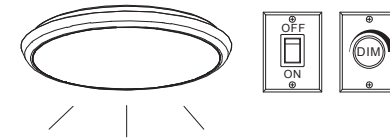
Step 5

Mount ceiling light into the right place



Step 6

Switch on



Functions Instruction



Emergency

Emergency function switches automatically between power cut and power restoration.

- Li battery, high efficiency
- Battery duration: 3 hours
- Charge period: 24 hours