

EMERGENCY EXIT SIGN

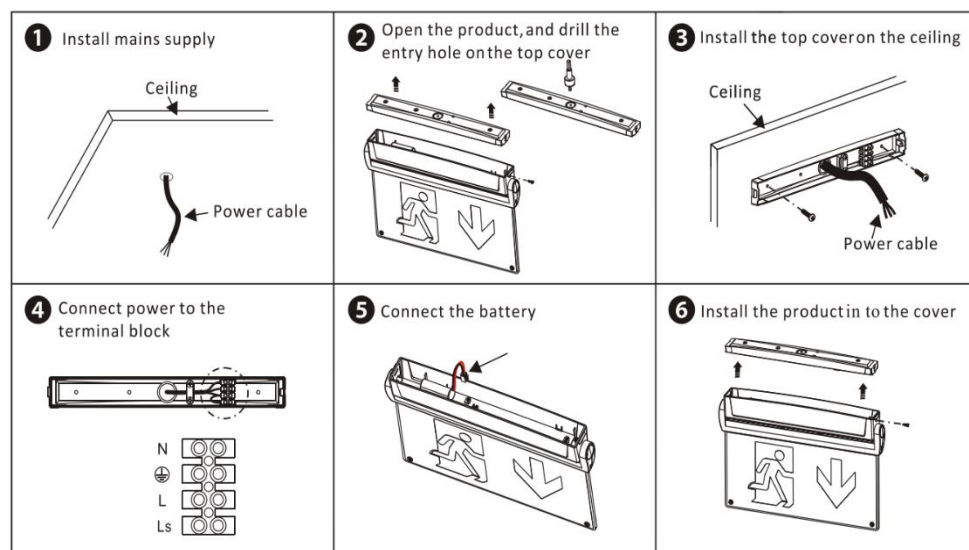
MODEL:E/5IN1/ST

SPECIFICATION

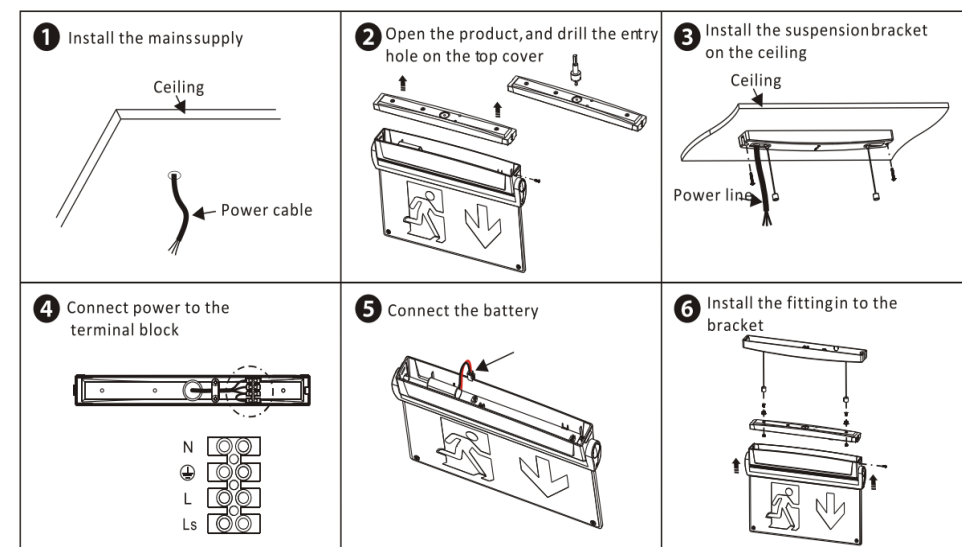
Operating environmental temperature	0°C - 40°C
Operating relative humidity	Less than 90%
Rated voltage	220-240V 50/60Hz
Rated power	2.5W
Conversion time	1 second
LED	SMT LED
Emergency Duration	More than 3 hours
Battery	3.2V 1500mAh LiFePo4
Fuse	1A/3.15A 250V
Recharge time	24 hours

Installation

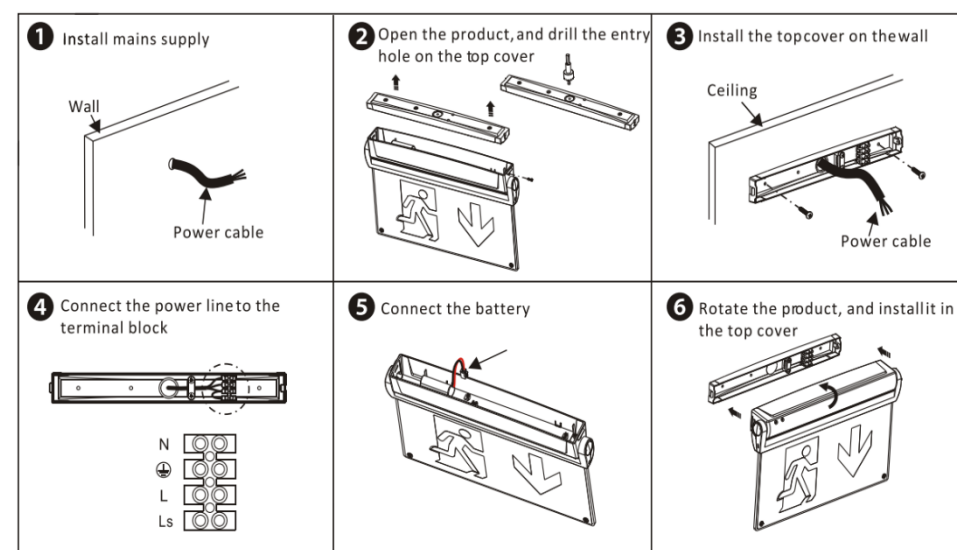
Ceiling Mounted



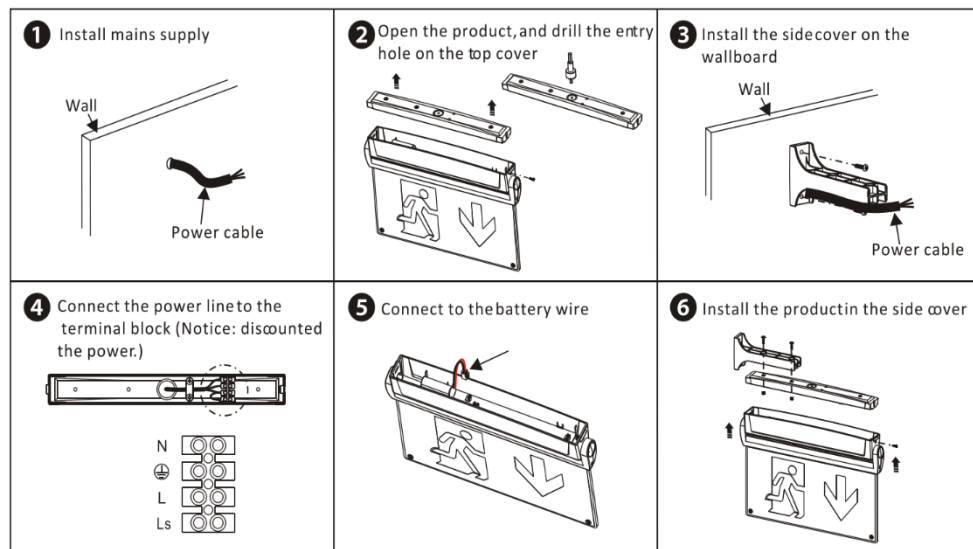
Ceiling Suspended Installation



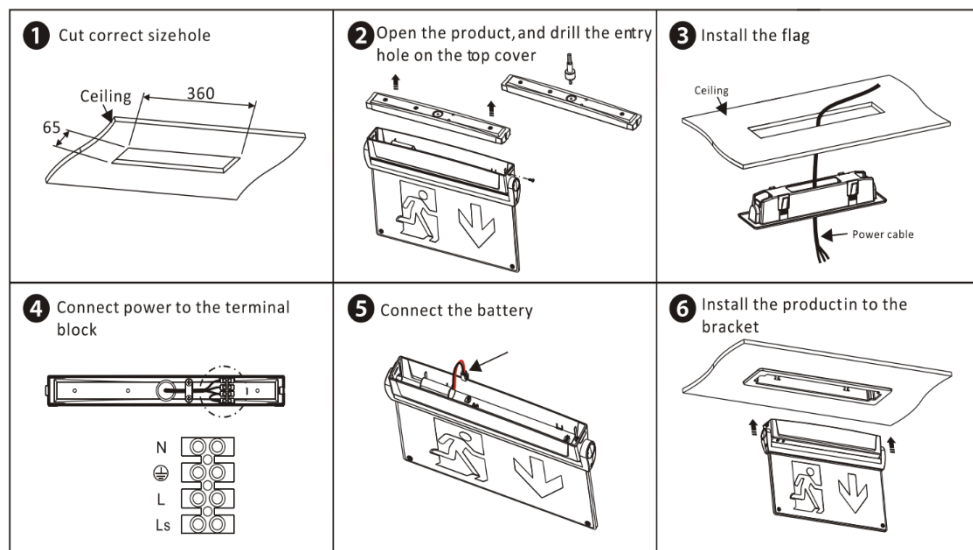
Front Mounted



Flag mounted



Recessed mounted



Installation

This product should be installed by a competent electrician.

1. Isolate the AC. supply and connect the unit.
An unswitched 240V A.C. supply must be connected to the live (L. Earth and neutral (N) terminal son the PCB block.
On maintained circuits continuous illumination can be achieved by connecting a live supply to the Ls(This maybe switched)
2. Plug battery lead into connection on the PCB
3. Refit the blade unit into the base of the unit making sure the clips engage and the screw is securely fixed.

SAFETY

1. This product should only be opened by a competent electrician.
2. Before working on the fitting ensure the mains and battery suppliers are isolated.
3. Ensure adequate ventilation around the fitting.
4. Batteries must be replaced with the correct matching type.
5. Ensure batteries are disposed of in the appropriate manor.
6. The light source contained in this luminaire shall only be replaced by the manufacturer or his service agent or a similarly qualified person.

SELF TEST FUNCTION

This emergency exist sign will automatically carry out the following tests.

1. 10 minute test every month (Green LED off)
2. 3-hour test every 12 months (Green LED off)

LED Indicators

- | | |
|---------------------|---------------------------------------------|
| 1. Normal operation | Green LED On |
| 2. Battery failure | Red LED flashes once every 3 seconds |
| 3. Main LED failure | Red LED flashes twice every 3 seconds |
| 4. Duration failure | Red LED flashes three times every 3 seconds |

In-built test switch

When the mains is connected:

- 1 second press resets the auto timer (allows testing times to be chosen)
3 second press starts 5 minute auto test

Auto test switch /Time switch  Switch

